

**Serie | 6, integrated rangehood, 70 cm, Stainless steel
DHL785BAU**



Optional accessories

DHZ5605 : Standard recirculation kit

The integrated rangehood: offers a sleek and seamless design in the kitchen with fully integrated installation.

- **LED lighting:** for perfect, energy-efficient illumination of the cooktop.
- **Intensive speed setting:** removes strong kitchen odours especially quickly and effectively.
- With exhaust, the air is cleaned by a grease filter and then ducted to the outside which ensures optimal kitchen air quality.
- Dishwasher-safe metal grease filters for easy cleaning.
- **Intensive speed setting with reset:** automatically resets the hood to normal speed setting

Technical Data

Typology : Built-in/Built-under

Approval certificates : Australia Standards, CE, VDE

Length electrical supply cord : 150 cm

Required niche size for installation (HxWxD) : 418mm x 676.0mm x 264mm mm

Minimum distance above an electric cooktop : 500 mm

Minimum distance above a gas cooktop : 650 mm

Net weight : 9.1 kg

Type of control : Electronic

Number of power settings : 3-stages + intensive setting

Maximum output air extraction : 630 m³/h

Boost position output recirculating : 664 m³/h

Maximum output recirculating air : 571 m³/h

Boost position air extraction : 730 m³/h

Number of lights : 2

Noise level : 66 dB(A) re 1 pW

Diameter of air outlet : 150 / 120 mm

Grease filter material : Washable aluminium

EAN code : 4242002831183

Connection Rating : 277 W

Fuse protection : 3 A

Voltage : 220-240 V

Frequency : 50 Hz

Plug type : AU plug

Installation type : Built-in



**Serie | 6, integrated rangehood, 70 cm,
Stainless steel
DHL785BAU**

The integrated rangehood: offers a sleek and seamless design in the kitchen with fully integrated installation.

Design & Innovation

- Canopy Stainless steel
- Appliance colour: Stainless steel

Power and Mode of Operation

- 3 power settings plus intensive setting
- Extraction rate according to EN 61591 \varnothing 15 cm:
 - max. Normal use 630 m³/h
 - Intensive 730 m³/h
- Ducted and recirculated-air operation
- Accessories required for recirculation mode: CleanAir Module
- Electronic controls with low-lift push buttons
- Twin channel high performance fan motor
- Rim ventilation
- Noise min./max. Normal Level: 53/66 dB
- Power rating: 277 W

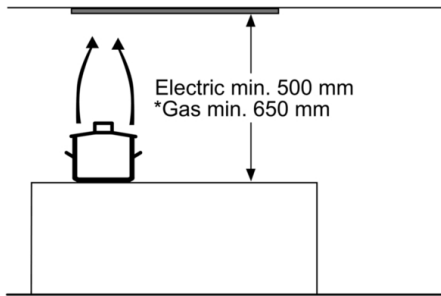
Comfort & Convenience

- Dishwasher safe metal grease filters
- Intensive operation automatic revert - 6min
- 2 x 2 Watt LED Lights

Dimensions (HxWxD)

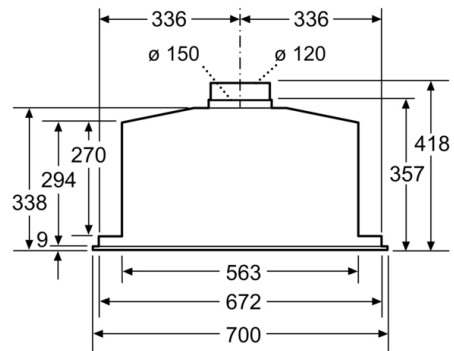
- Dimensions exhaust air (HxWxD): 418-418 x 700 x 282 mm
- Dimensions recirculating (HxWxD): 418-418 x 700 x 282 mm
- Diameter pipe \varnothing 150 mm (\varnothing 120 mm enclosed)
- Electrical cable length 1.5 m

**Serie | 6, integrated rangehood, 70 cm,
Stainless steel
DHL785BAU**

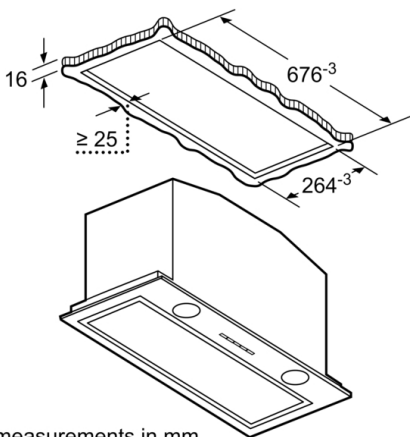


* from upper edge of pan support

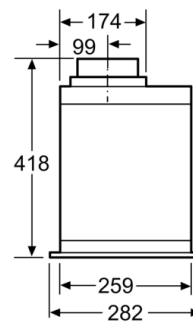
measurements in mm



measurements in mm



measurements in mm



measurements in mm